

RP70 *Rugged and Professional*



GEN2WAVE





1. RP70 Intro

“The RP70 is 7 inch professional rugged tablet running with Windows 10 IoT Enterprise platform. It is born to establish a new form factor between handy smartphone and tablet PC. More and more, professionals require larger display terminals while keeping compact and light weight design. Maximizing portability, 7 inch is perfect size for professionals to view PDF document and enter data conveniently in the field. The RP70 is as light as 600 grams and 19mm thin, smoothly slipped into pocket of professionals’ uniform.

2. Design

Truly Handy and Pocketable

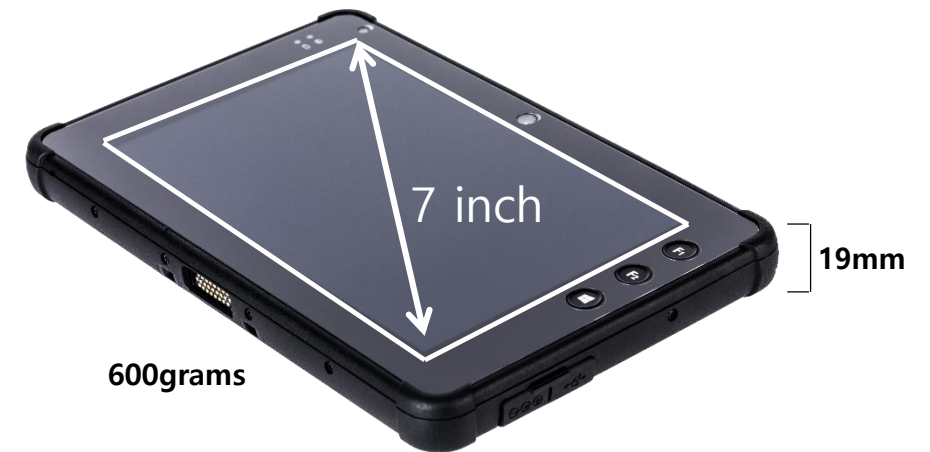


Pocketable Size



RP70 has 19mm thickness competitively slimmer than average rugged tablet PC. With light weight of 600 grams, it provides utmost portability and can be slipped smoothly into the pocket of professionals' uniform.

7 inch display is perfect for professionals to view PDF document and enter data conveniently in the field.



2. Design

Born to Survive in Extreme Environment

Anti-shock resistant : 1.2 meter drop certified

IP 65 sealing

Operating Temperature of $-20^{\circ}\text{C} \sim +60^{\circ}\text{C}$

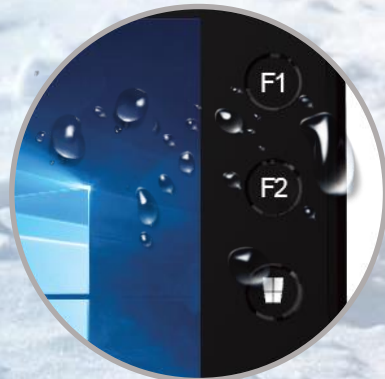
Anti Shock Resistant



Four edge rubber bumper



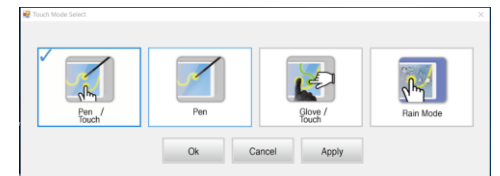
Reliable hardware keys





Rainmode

Rainmode enables RP70 to sense precise point of your finger during rain, and snow without erroneous input.



Your outdoor tablet



2. Design



Your indoor PC

2. Design

Professional Vehicle Cradle with wide extension capabilities
Ethernet, HDMI, Serial, 4 USB Port
Flexibility of Customization



3. Advantages

(1) Excellent Outdoor Readability,
even in direct and sharp sunlight

3. Advantages



(2) Fine tip stylus with Highly Responsive Display

3. Advantages

The highly responsive touch screen enables precise and accurate point on the screen
The fine tip stylus is perfectly working especially in GIS (Geographic Information System) applications.



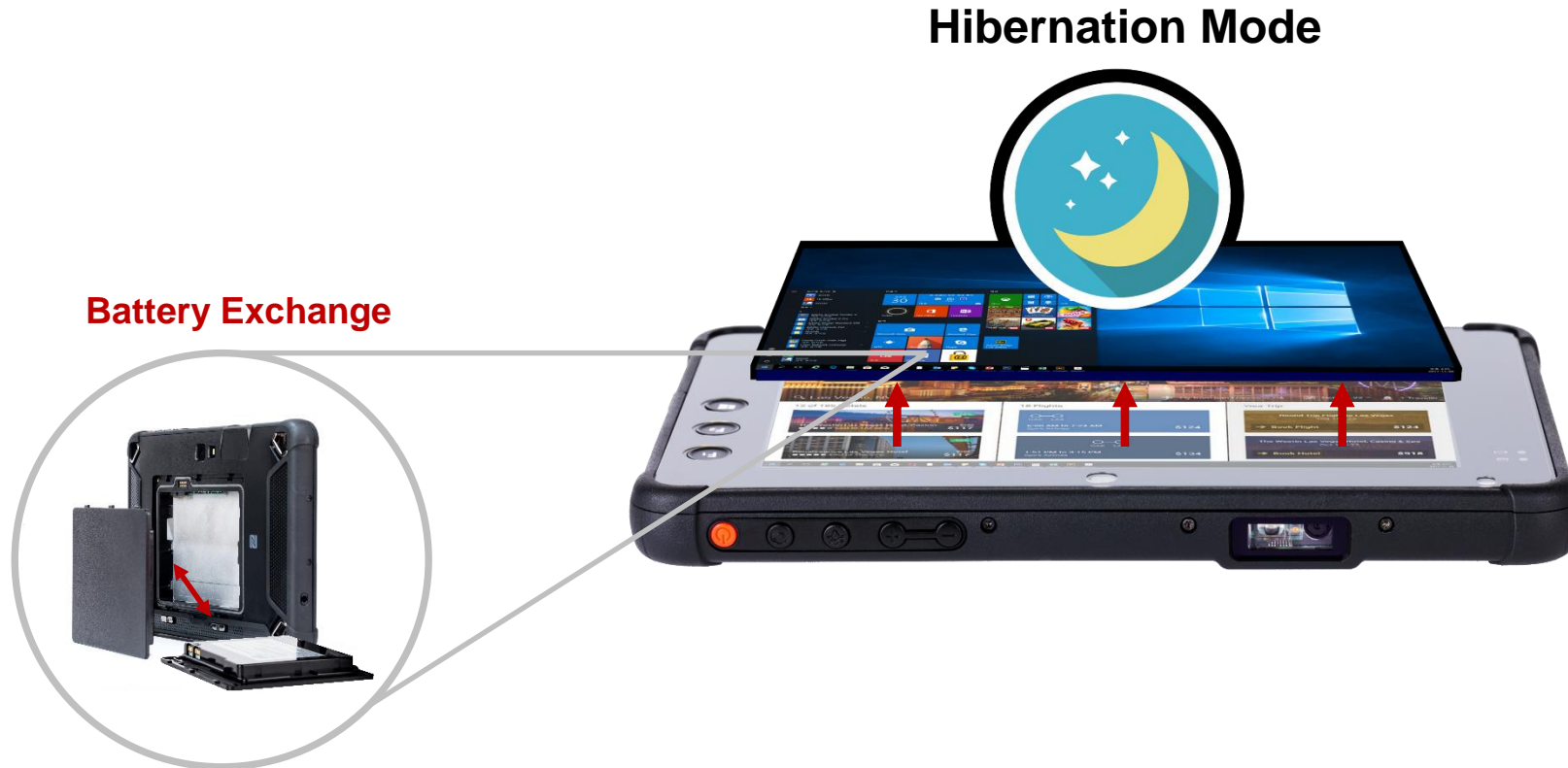
3. Advantages

(3) User Removable Battery without reboot

User removable battery is great benefit of the RP70.

Thanks to that, professionals can conduct extra-long hour task out in the field.

The battery is conveniently exchangeable without reboot



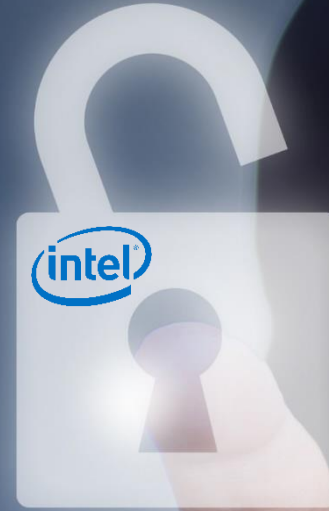
(4) The latest powerful platform

Windows 10 IoT Enterprise

Intel CherryTrail 1,9GHz Quad-Core Processor

4GB RAM, 64GB (128GB optional) ROM

3. Advantages



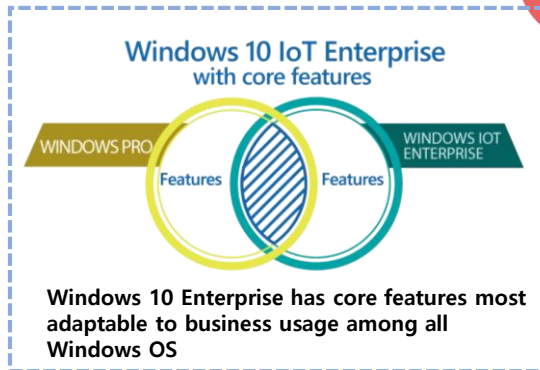
3. Advantages

(5) Windows 10 IoT Enterprise

The most advanced OS for Enterprise use with brilliant advantages :

Security

Sensitive information is secure with Windows 10 IoT Enterprise. Devices can be locked down to prevent users from accessing system settings and tampering with user interfaces.



Licensing & Activation

Windows 10 IoT Enterprise is simple to activate and easy to maintain.

Customization

As the successor to Windows Embedded Standard, Windows IoT Enterprise offers the same functionality found in Windows 10 while excluding unwanted user-facing features. This allows digital signage vendors to provide a predictable and consistent end-user experience across multiple device platforms.

(6) Built-in Professional 2D Imager and NFC Reader Scanner (Honeywell) and NFC Reader

3. Advantages



(7) Professional Scan Emulator

3. Advantages

Scanner Setting

-Auto Start: Starts automatically as soon as tablet OS starts
-Auto Scan: Scan mode which enables you to scan without pressing function button

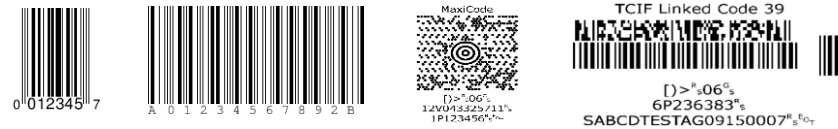
Scan Prefix / Suffix

Prefix:

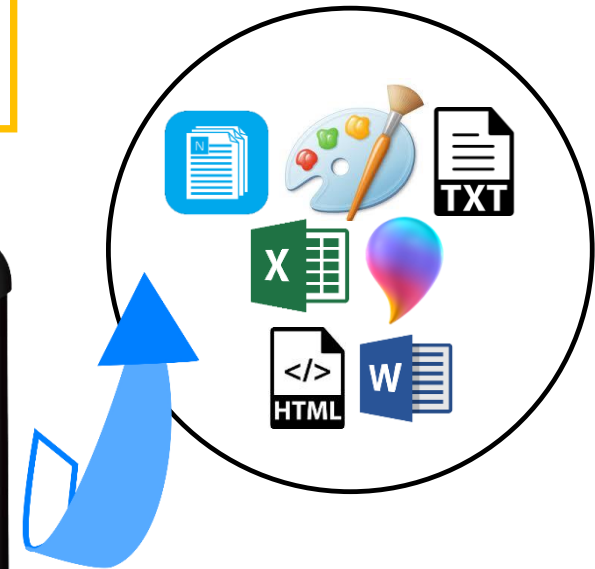
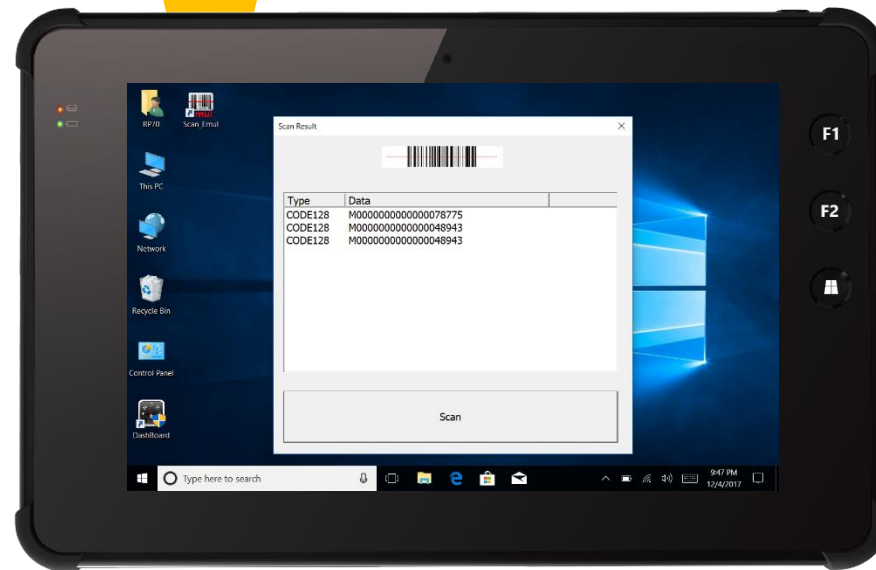
Suffix:

\r:Return Key
\b:Backspace key
\h:Horizontal tab
\: \

Scanned Barcode Editing



All Types of Barcode (1D/2D)

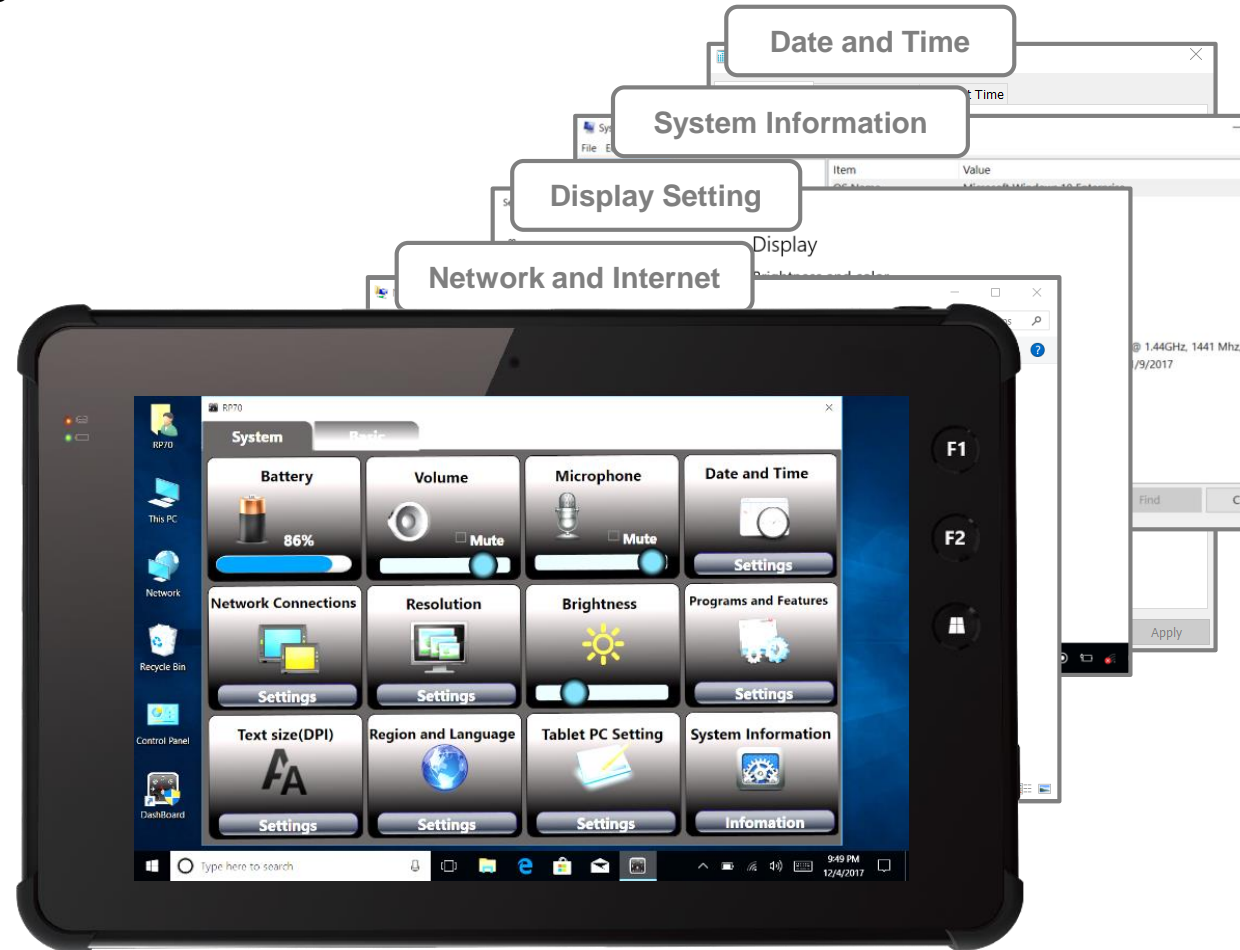


(8) Efficient & Convenient Setting Dashboard

intuitive and easy setting tool

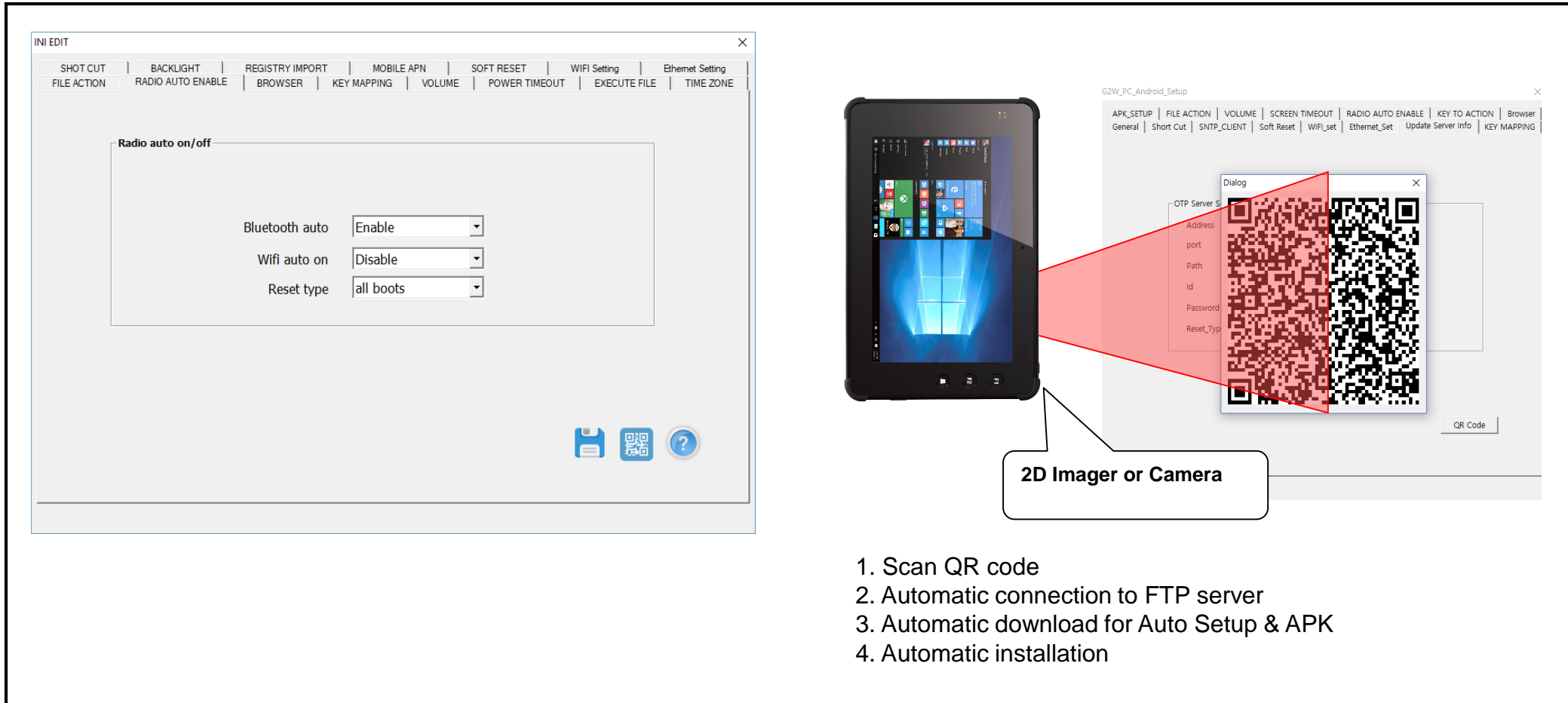
with less depth through Windows

3. Advantages



(9) Autoseup

Autoseup has easy UI to pre-stage RP70 settings such as ethernet setting, mobile APN, hardware keys, key mapping ..etc. It enables mass installation in an efficient and convenient manner.

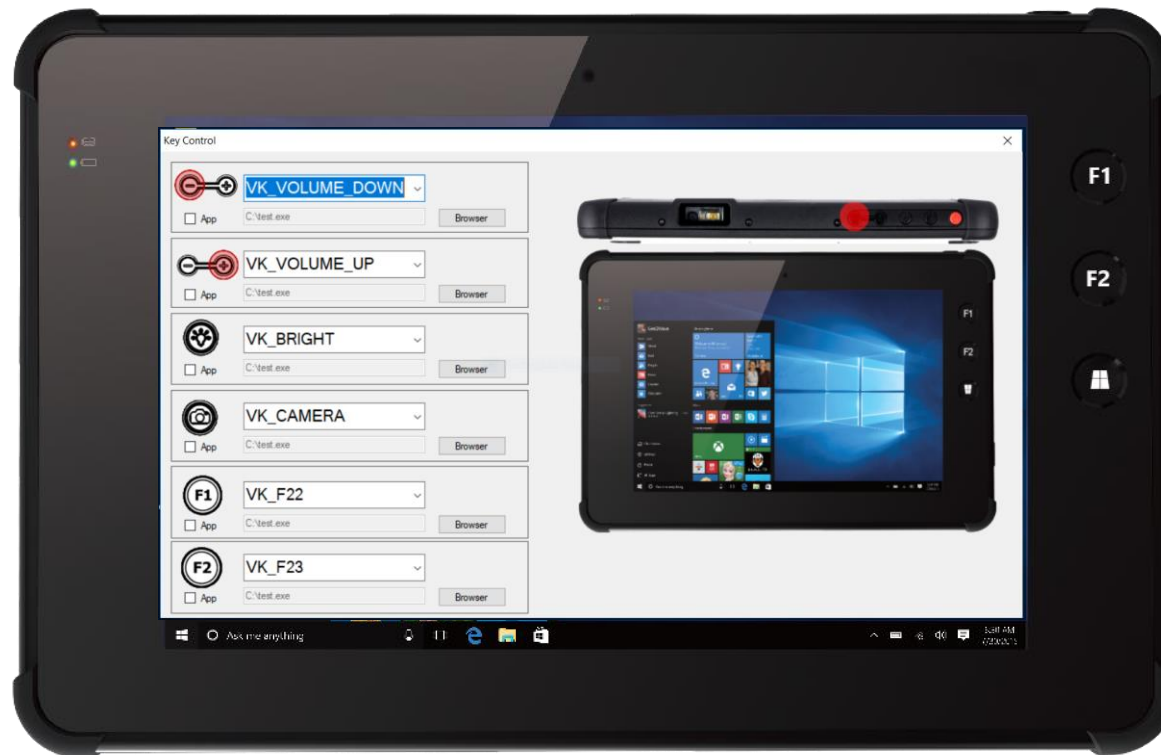


The image displays the 'INI EDIT' application interface on the left, which includes a menu bar with options like SHOT CUT, BACKLIGHT, REGISTRY IMPORT, MOBILE APN, SOFT RESET, WIFI Setting, and Ethernet Setting. The main area shows 'Radio auto on/off' settings for Bluetooth auto (Enable), Wifi auto on (Disable), and Reset type (all boots). On the right, a diagram shows a tablet displaying a Windows logo, connected to a 'G2W_PC_Android_Setup' application. A red cone from the tablet points to a 'Dialog' box containing a QR code and a list of fields: OTP Server S, Address, port, Path, Id, Password, and Reset_Typ. A callout box labeled '2D Imager or Camera' points to the QR code. Below the diagram is a numbered list of steps: 1. Scan QR code, 2. Automatic connection to FTP server, 3. Automatic download for Auto Setup & APK, 4. Automatic installation.

1. Scan QR code
2. Automatic connection to FTP server
3. Automatic download for Auto Setup & APK
4. Automatic installation

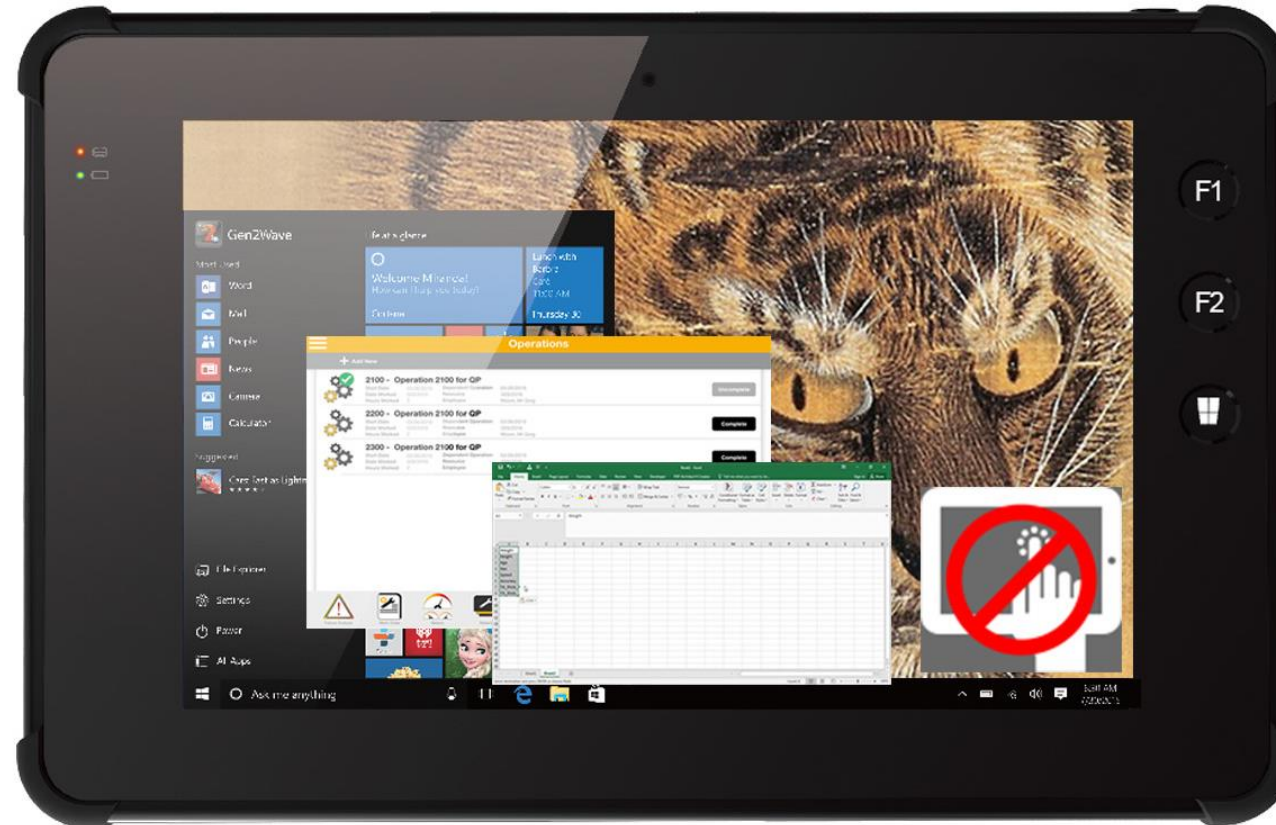
(10) Easy Key Mapping & Intuitive UI

Autosetup has easy UI to pre-stage RP70 settings such as application installation, wireless setting, and key mapping, etc. It enables mass installation in an efficient and convenient manner.



(11) Screenlock Mode

Keep your work and programs safe while your concentration is away from RP70.
Screenlock mode keeps your work on process, while preventing erroneous input.



4. Specification

Performance Characteristics

CPU	INTEL Cherry Trail Quad Core X5-Z8350 Processor (1.44GHz up to 1.9GHz / 2MB Cache / 64bit / SDP 2W)
OS	Windows® 10 IoT Enterprise
Memory	4 GB DDR3L-1600MHz 64GB EMMC (128GB optional)
Communication Interface	USB Host 3.0, A type, super speed (5Gbit/s) Desktop Cradle Interface : USB 2.0 A type Host 3ea, HDMI 2.0 1ea, Serial 1ea, Ethernet 1ea Extension 10pin connector : supporting USB and Serial interface

Battery(5600mA) Performance

Standby Time	100 hours / 5,600mAh standard battery
Video Streaming Time	5 hours / 5,600mAh standard battery 8 hours / 5,600mAh standard battery (keep turning on the LCD module and the communication module)
Charging time	5hours / 5,600mAh standard battery

Physical Characteristics

Dimensions	131mm H X 203mm W X 19mm D
Weight	600 gram with 5,600mAH standard battery
Display	7 Inch / WXGA (800x1280), 700 nits (cd/m ²)
Input	3 Front keys, 5 Side keys (Including 2 programmable keys)
Battery	Standard : 5,600mA/h, 3.7V, Li-polymer Extended : 10,200mA/h, 3.7V, Li-polymer
Expansion Slot	MicroSDXC / Up to 2 TB cards supported
Audio	Dual Speaker / Receiver / MIC
Wireless (WWAN)	4G LTE / HSPA+ / GSM / GPRS EU Frequency band 4G LTE : 800, 900, 1800, 2100, 2600MHz 3G HSPA+ : 900, 1800, 2100MHz 2G GSM/GPRS : 900, 1800MHz
Bluetooth	Bluetooth 4.0 + HS (BT Headset support)
Wireless LAN	802.11 a/b/g/n/ac
GPS	Embedded A-GPS
Notification	Charging status LED, Power on/off LED
Scanner	2D Imager (Honeywell N3680)

User Environment

Sealing	IP65
Drop Spec.	1.2M drop to concrete. 2 drops per 6 sides
Operating Temperature	-20 °C ~ +60 °C
Storage Temperature	-30 °C ~ +70 °C
AC Power	Input : AC 100 ~ 240V, 50 ~ 60Hz Output : DC +5.0V, 5A
Relative Humidity	Non-condensing, 93%

Camera

Resolution	8.0 megapixel with Auto Focus (Rear Camera) 2.0 megapixel with Fixed Focus (Front Camera)
Illumination	User controllable flash
Lens	Auto Focus (Rear Camera)

Interactive Sensor Technology

Motion-sensor: 3-axis accelerometer that enables motion-sensing applications for dynamic screen orientation

E-compass : To tilt compensated electronic compass utilizing an accelerometer and a magnetometer.

Ambient light sensor : To adjust the screen brightness automatically based on the available light.

Regulatory

Environmental	RoHS-compliant
Electrical Safety	IEC 60950-1: 2005 (2nd Edition) and/or EN 60950-1:2006
WLAN & Bluetooth	ETSI EN300328:V1.7.1(2006-10)
EDGE/GSM 900/DCS 1800	3GPP TS 34.123 GCF approved module ETSI EN301 511:V.9.0.2(2003-03) ETSI TS 151 010-1 :V7.9.0(2008-04)
HSDPA	ETSI EN 301 908-1&2:V.3.2.1(2007-5) 3GPP TS 25.102 V8.0.0 (2008-05)
RF Exposure	EN 60950-1: 2006+A11:2009 , EN50360: 2001, EN62209-1: 2006 and IEEE1528-2003
EM/RFI	ETSI EN 301 489-1 V1.8.1(04/2008) ETSI EN 301 489-7 V1.3.1(11/2005) ETSI EN 301 489- V1.3.1(04/2008) ETSI EN 301 489-24 V1.4.1(09/2007)
Laser Safety	IEC 60825-1:1993+A1:1997+A2:2001, EN 60825-1:1994+A2:2001+A1:2002 "Safety of Laser products"

2D Image Scanner (Honeywell N3680, H/W Decoder)

Sensor	CMOS sensor with 640 x 480 pixel resolution
Illumination and Aiming	White LED illumination; red LED dot aimer
Typical Frame Rate	30 frames per second
Motion Tolerance	Up to 10cm/s for 13mil UPC at optimal focus
Field of view	Horizontal 37.8°, Vertical 28.8°
Scan Angles	Tilt: 360°, Pitch $\pm 45^\circ$, Skew: $\pm 45^\circ$
Symbol Contrast	35% minimum print contrast ratio

Standard Reading Range

SYMBOLGY	*TYPICAL RANGE
100% UPC	55 mm to 280 mm (2.1 in to 11.0 in)
5MIL CODE 39	61 mm to 130 mm (2.4 in to 5.1 in)
20MIL CODE 39	60 mm to 380 mm (2.4 in to 15.0 in)
6.7MIL PDF417	60 mm to 125 mm (2.4 in to 4.9 in)
10MIL DATA MATRIX	60 mm to 130 mm (2.4 in to 5.1 in)
20MIL QR	50 mm to 230 mm (2.0 in to 9.0 in)

* Typical performance may be impacted by barcode quality and environmental conditions

Peripherals and Accessories

Desktop cradle (1slot)	Device charging slot / 1ea Additional battery charging slot / 1ea Ethernet port / 1ea HDMI 2.0 Full size type A / 1ea (High definition Multimedia Interface) USB Host 2.0 / 3ea Serial RS232C / 1ea
Car Cradle	Device charging slot / 1ea Ethernet port / 1ea HDMI 2.0 Full size type A / 1ea (High definition Multimedia Interface) USB Host 2.0 / 2ea Serial RS232C / 1ea Power input (DC-IN) / 1ea
Electrical Safety:	IEC 60950-1: 2005 (2nd Edition) and/or EN 60950-1:2006
EMI/RFI:	EN 55022:2006 Class B EN 61000-3-2:2006 EN 61000-3-3:1995 +A1:2001+A2:2005

5. Application

Field Service



Retail Shops

- Multiplex shopping malls
- Drug stores



Staff enablement Inventory management

Price Strategy Personal Shopping



Transportation

Courier Express Parcel

Retail Distribution

Mail Courier Service

Mass Transport



Warehouse Management



Receiving



Put-Away &
Replenishment



Inventory



Picking





Sales Force Automation
RP70 works 24/7 for speedy process

Law Enforcement

Traffic Law Enforcement

Parking Law Enforcement

Patrol Mobile Solution



6. Accessories & Package

Names	Description	Image
Standard Accessories	<p>AC line cord & Power supply Stylus pen, Pen string Hand Strap</p>	
Battery	<p>Li-ion Polymer Battery</p> <p>Standard 3.7V 5600mAH Extended 3.7V 10200mAH</p>	
Professional Desktop Cradle	<p>Device charging slot, Additional battery charging slot, USB Host 2.0, A type HDMI 2.0 Full size A type, Serial RS232C Ethernet port</p> <p>Lock to place tablet with stability Key to keep tablet safe.</p>	
Professional Car Cradle	<p>Device charging slot Cigar plug input power, Direct Input power, USB Host 2.0, A type HDMI 2.0 Full size type A Serial RS232C Ethernet port</p> <p>Lock to place tablet with stability Key to keep tablet safe. Two wheels to adjust angles of Display</p>	